

Old, or cheap brushes for many different uses, i.e. applying putty, glue, and reproducing textures, etc.



A silhouette pattern is useful for comparing geometries.



Stand.



Drier used when applying decals. It can also be used to accelerate the drying time of paint.

4. EQUIPMENT

4.1 What basic equipment should I have?

As well as tools, all kinds of easily affordable home products can be utilised. Many are as useful as tools and make any job that much easier.



A spray bottle filled with water is useful both for cleaning and for 'wetting down' an area so that specks of dust are prevented from contaminating a part that is to be painted.



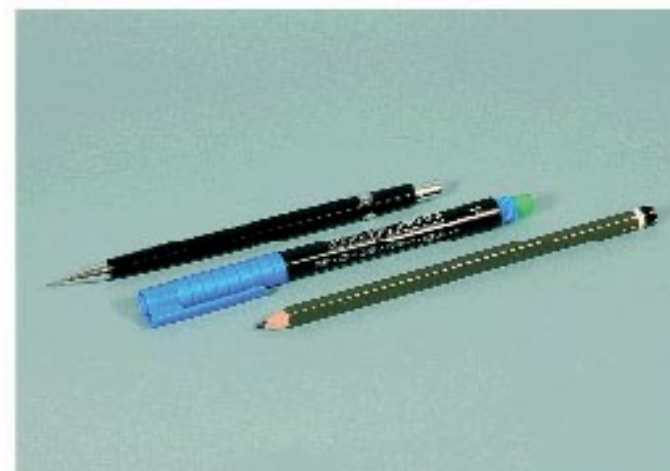
Cotton buds and different size brushes are excellent for cleaning tools and removing dust and paint residue.



Hypodermic needles are useful for mixing the correct paint proportions, injecting resin, making arials, etc.



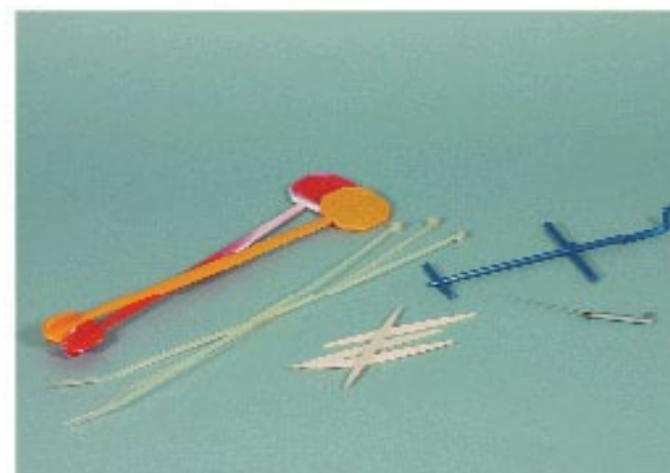
Vinyl or nitrile gloves are indispensable for avoiding paint stains or preventing the transference of contaminants to painted surfaces.



Pencils and felt tip pens are useful for making notes on kit instructions, marking defects on a model. Pencil lead is also very useful for adding special effects to an engine.



'Blu-Tack' is a very practical item for holding parts throughout the painting process, or as a mask, as it will not 'lift' the paint and leaves no residue when removed.



Lots of other items, like tooth picks or plastic rod are perfect for holding parts during painting, or paint removal, etc.



Glass or special plastic receptacles are useful for mixing chemicals or paints that could otherwise damage other plastic.

14.5 How to make patterns for decals?



The outline is drawn or traced onto a piece of paper.



The paper pattern is used to outline it onto the decal sheet of the correct texture; carbon fibre in this instance.



The decal is then applied in the same way as explained earlier.



A pattern can also be made from masking tape.

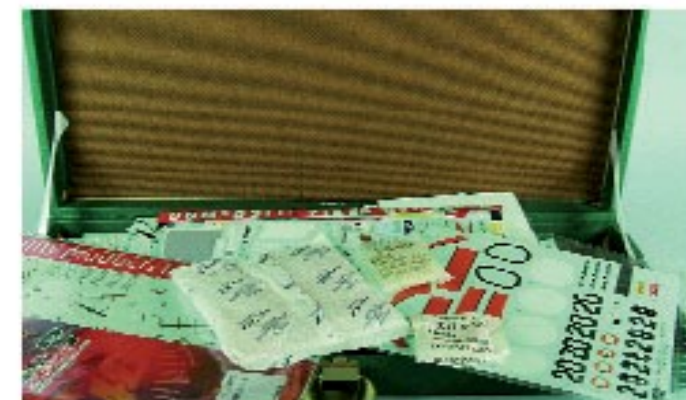


The desired thread direction can be marked out with a pencil.



14.6 How should decals be stored?

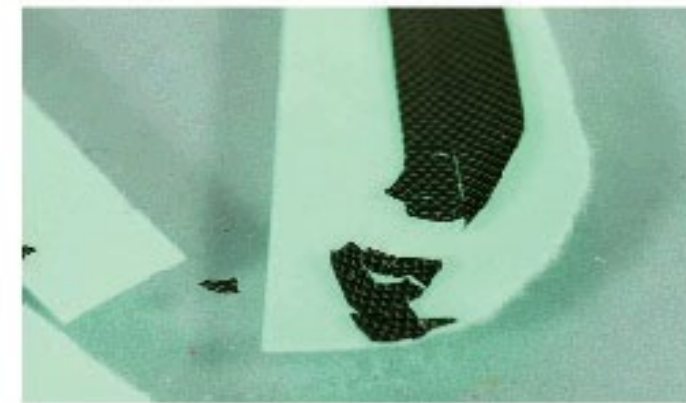
Quite often, modellers hold a stock of models ready for the time when they can be assembled. In these circumstances, decals can be seriously damaged due to room temperature and moisture.



To keep decals moisture free, store in a box along with small bags of silica gel (moisture retainers) such as those found in boxes containing electronic equipment.



A typical example of decal damage: colour changes and cracking.



22.3 How to work with acetate windows before gluing?

Trimming is similar to the earlier case. But, as this time the part is bigger, the work will be that much easier.

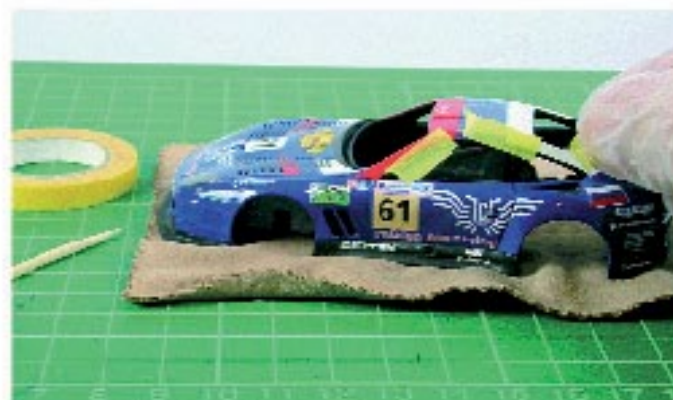


The part is placed in position and the surplus marked with a felt pen.



The part is masked with tape to protect it from possible mistakes and the remaining material sandpapered.

22.4 How to glue acetate windows?

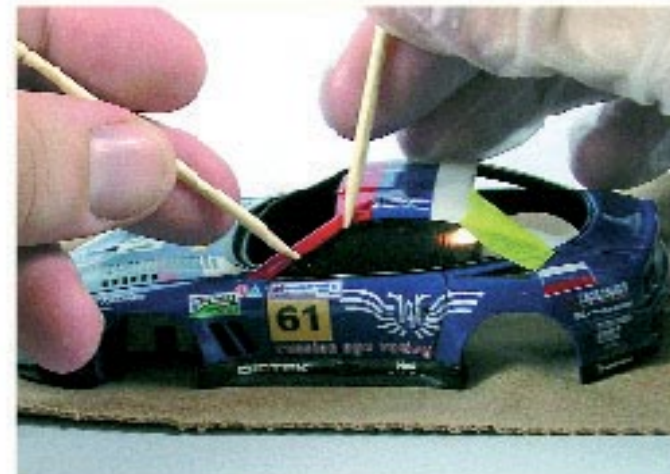


This time let us proceed with a side window. First, place it in position before gluing and hold it with adhesive tape.



Once the part is positioned correctly, proceed to glue it. The first thing to do is remove the tape from one side using two toothpicks: one to hold the part and the other to apply the glue (in this case, cyanoacrylate, superglue). When handling large parts that have to be fixed to curved surfaces, it is best to use instant superglue. However, it should be noted that this glue should be handled with great care, using it in tiny amounts and applying it perpendicularly to the part on just a few points and not all around the edge.

Immediately after the glue has been applied, apply a little pressure with the other end of the toothpick for a few seconds. Finally, check that the window has successfully glued all round.



When one end of the part has been fixed, follow the same procedure for the remaining points. White glue could, of course, also be used for this operation. However, we have discovered that, sometimes it ages and the part comes unglued. According to our experience, superglue is the best gluing medium for this job.



The final step, as usual, is to carefully clean off all fingerprints and other marks with alcohol.

